

Panasonic®

Operating Instructions <Browser Guide>

Center Module

Model No. **WX-CC411**
WX-CC412



Contents

Before use	3	Information display menu	33
Preface	3	Checking the status of All-In-One Headsets and Belt Packs	33
Features	3	Checking the status of alerts	33
System diagram	3	Troubleshooting	35
Operation	4		
Concerning the Operating Instructions	5		
System requirements	6		
Trademarks and registered trademarks	6		
Abbreviations	6		
Operating precautions	7		
Router	7		
Browser Refresh Rate	7		
Browser Compatibility	7		
Network	8		
Examples of connections	8		
Network Security	8		
Browser Operation	9		
Connecting the Center Module via a PC	9		
Setup Instructions	9		
Operation Screen	10		
Setup Menu	10		
Configuring and Confirming Settings at Installation	11		
Confirming the group settings for All-In-One Headsets and Belt Packs	17		
Confirming store settings	17		
Configuring and confirming settings for each lane	19		
Confirming message settings	20		
Confirming the security alert settings	25		
Confirming the remaining capacity and the total capacity of the SD card	26		
Confirming quick operation settings	27		
Backing up settings	27		
Performing maintenance on the Center Module	28		

Before use

■ Preface

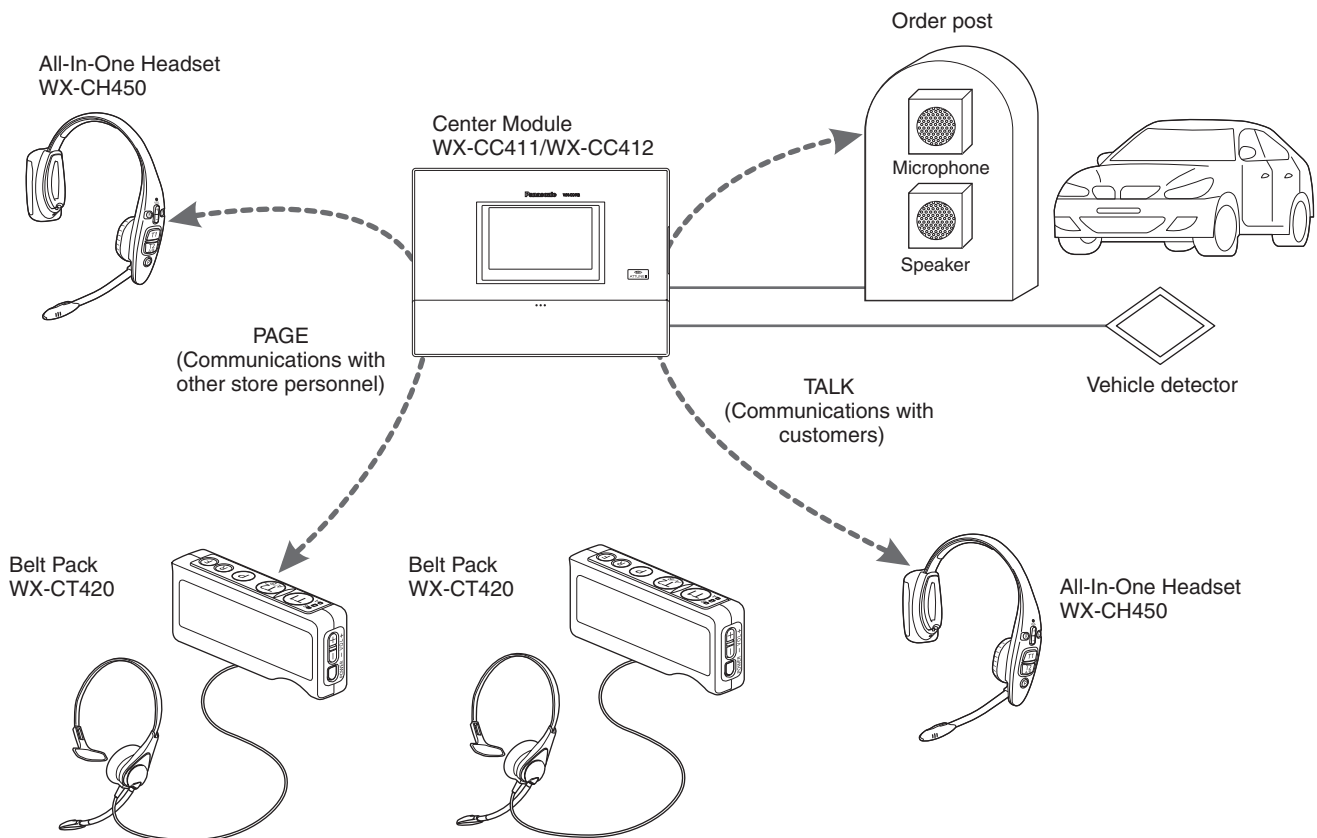
The WX-CC411 and WX-CC412 are Center Modules for the wireless intercom systems that are used in drive-thru outlets.

■ Features

- The WX-CC411 is designed for single lane operation of drive-thru outlets; the WX-CC412 is designed for dual lane operation.
- A system compliant with the 1.9 GHz band DECT* standard is used so the voices of the store personnel and customers are heard clearly and distinctly even in open areas, and interference is minimal, resulting in stable communication.
* Digital Enhanced Cordless Telecommunications
- A high degree of vocal clarity is ensured by a powerful echo canceller and digital noise reduction (Digital Noise Reduction).
- The cabinet supports wall-mounting for easy installation.
- The total number of All-In-One Headsets and Belt Packs that can be registered is 32. Up to four operators can communicate at the same time per lane using All-In-One Headsets and Belt Packs.
- This unit has a 7-Type LCD display with a touch panel, and is easy to operate.
- This unit can be connected to an IP network using Ethernet to enable remote control operations to be performed.
- Using an SD card, it is possible to back up and restore the settings, and save messages unique to the outlet.
- The system contains a scheduler to enable the greeter message to be changed at designated times and reminder messages to be played back automatically.
- Up to four Network Cameras made by Panasonic can be registered, and their images can be monitored on this unit's LCD display.
- Alert signals that have been received can be sent to the All-In-One Headsets or Belt Packs, signals can be output to external devices, and alert emails can be sent to external destinations.

■ System diagram

By connecting the Center Module and All-In-One Headsets or Belt Packs wirelessly, it is possible to communicate between the All-In-One Headsets or Belt Packs or between the All-In-One Headsets or Belt Packs and the customers at the order post.



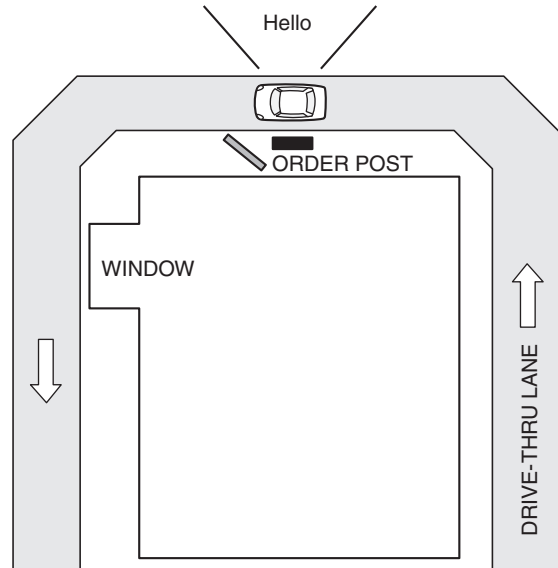
Before use

■ Operation

This system supports the following operations that are suited to drive-thru customers.

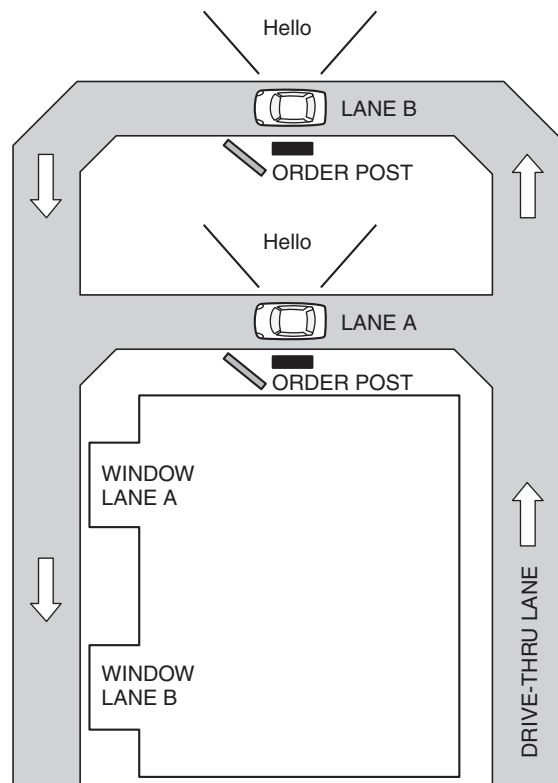
Single lane

Operations in an environment in which only one order post is installed are referred to as “single lane” operations. These lane operations are supported by the WX-CC411.



Dual lane

Operations in an environment in which the order posts are installed in parallel are referred to as “dual lane” operations. With dual lane operations, the vehicle detectors for lane A and lane B operate independently of each other, and when each of these vehicle detectors is set to ON, the greeter message for the lane concerned is played back. These lane operations are supported by the WX-CC412.

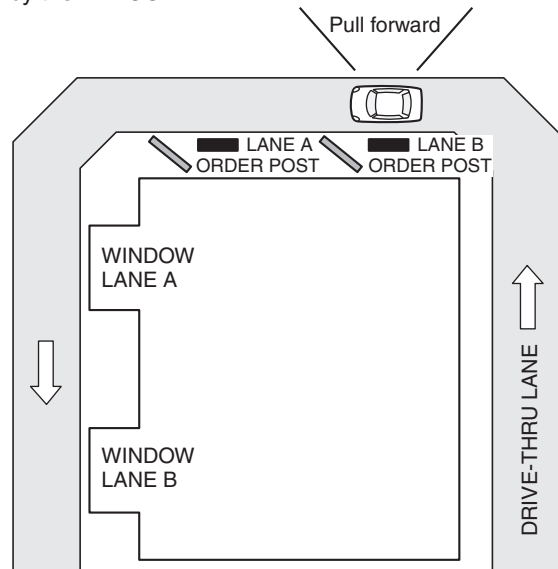


Before use

Tandem lane

Operations in an environment in which the order posts are installed in series are referred to as “tandem lane” operations. When the vehicle detector for lane A is OFF and the vehicle detector for lane B is set to ON, a tandem lane message urging the customer to move to lane A is played back.

These lane operations are supported by the WX-CC412.



■ Concerning the Operating Instructions

The Operating Instructions consist of the Operating Instructions <Installation Guide>, Operating Instructions <Setup Instructions> (PDF file) and Operating Instructions <Browser Guide> (PDF file).

- Operating Instructions <Installation Guide>:
These instructions describe how to connect the Center Module with the required devices, how to install them and how to perform settings (excerpted).
- Operating Instructions <Setup Instructions> (PDF file):
These instructions describe the settings that must be performed before this unit can be used.
- Operating Instructions <Browser Guide> (this manual: PDF file):
These instructions explain access from the browser.

To read PDF files, you will need Adobe® Reader® which is available from Adobe Systems. When Adobe® Reader® is not installed on the PC, download the latest Adobe® Reader® from the Adobe web site and install it.

Important

- Download the “Operating Instructions <Setup Instructions>” from the home page given below.
<http://www.panasonic.com/business/POS-drive-through/manuals.asp>

Before use

■ System requirements

CPU	1 GHz or faster 32-bit (x86) processor or 64-bit (x64) processor
RAM	1 GB (32-bit) or 2 GB (64-bit)
Network function	1 port 10BASE-T or 1 port 100BASE-TX
Operating system	Microsoft® Windows® 7 Professional SP1 32-bit Microsoft® Windows® 7 Professional SP1 64-bit Microsoft® Windows® 8 Pro 32-bit Microsoft® Windows® 8 Pro 64-bit Microsoft® Windows® 8.1 Pro 32-bit Microsoft® Windows® 8.1 Pro 64-bit
Web Browser	Microsoft® Windows® Internet Explorer 9/10

■ Trademarks and registered trademarks

- Adobe, Acrobat Reader, and Adobe Reader are either registered trademarks or trademarks of Adobe Systems Incorporated in the United States and/or other countries.
- Microsoft, Windows, and Internet Explorer are either registered trademarks or trademarks of Microsoft Corporation in the United States and/or other countries.
- Screen shots are used in accordance with Microsoft Corporation guidelines.
- SD, SDHC Logo is a trademark of SD-3C, LLC.
- Other names of companies and products contained in these operating instructions may be trademarks or registered trademarks of their respective owners.

■ Abbreviations

The following abbreviations are used in this document.

- Microsoft® Windows® 7 Professional SP1 64-bit, Microsoft® Windows® 7 Professional SP 32-bit, Microsoft® Windows® 8 Pro 32-bit, Microsoft® Windows® 8 Pro 64-bit, Microsoft® Windows® 8.1 Pro 32-bit and Microsoft® Windows® 8.1 Pro 64-bit are referred to as Windows.
- SDHC and SD memory cards are referred to as “SD cards”.
- Universal Plug and Play is referred to as UPnP™ or UPnP.

Operating precautions

■ Router

When connecting the Center Module to the Internet via a router, use a broadband router with port forwarding function (e.g. NAT, IP masquerade).

■ Browser Refresh Rate

The browser refresh rate may become slower depending on the network environment, computer performance and traffic.

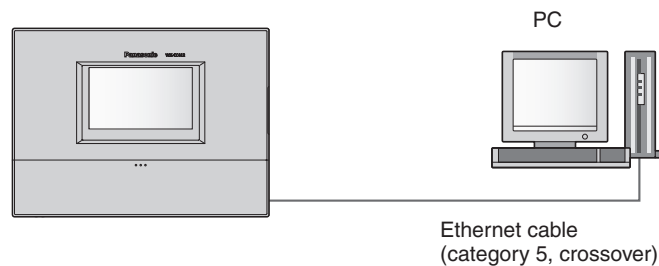
■ Browser Compatibility

This unit is compatible with Internet Explorer 9/10. If another browser or another version of Internet Explorer is used, the program may not be displayed or run properly.

Network

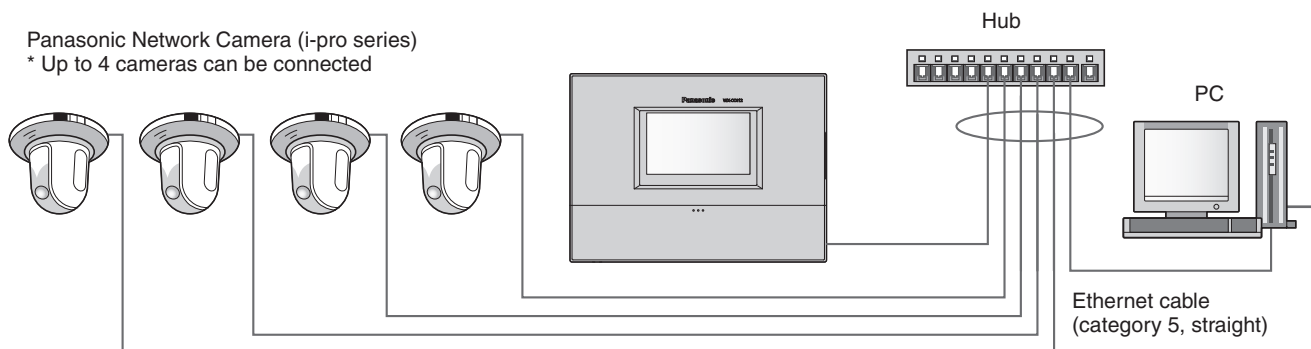
Examples of connections

● Direct connection to the PC



● Connection to a network via a hub

Panasonic Network Camera (i-pro series)
* Up to 4 cameras can be connected



Network Security

Security functions of the Center Module

- ① Limiting access with user authentication
Limits users who can access the Center Module.
- ② Limiting access by changing the HTTP port
Changing the HTTP port number prevents port scanning and other types of unauthorized access.
- ③ Encrypting access with HTTPS
Using HTTPS enables encryption of access to the Center Module to increase the security of communications.

Important

- Authentication information (e.g. usernames, passwords), server information and other types of information can be leaked on the network. Take measures to prevent this from happening, such as limiting access by user authentication or encryption of access with HTTPS.
- Always close all browsers after accessing the Center Module to increase security.
- Change user IDs and passwords often to strengthen security.

Note

- If user authentication fails (authentication error) 8 or more times in 30 seconds from a PC with an identical IP address, access to the Center Module will be blocked temporarily.
- If 10 minutes or more passes without any operation, clicking on buttons will not perform the action intended, and instead will return to the post-authentication screen.

Browser Operation

■ Connecting the Center Module via a PC

1 Launch the PC's Web browser.

2 Input the Center Module IP address into the address bar of the Web browser.

Example) `http://Center Module IP address`

This unit has the following default settings as the time of shipment:

IP address: 192.168.0.50

Port number: 80

Protocol: http

Important

- If the HTTP port number has changed from "80", input [`http://Center Module IP address: port number`] into the [Address bar].
Example) If the port number is set to 8080:
`http://192.168.0.50:8080`

3 When a connection has been established between the Center Module and the PC, an authentication pop-up screen will appear. Input the username and password.

The following are the default setting username and password:

Username: admin

Password: 12345

- If authentication is successful, the operation screen will appear.

Note

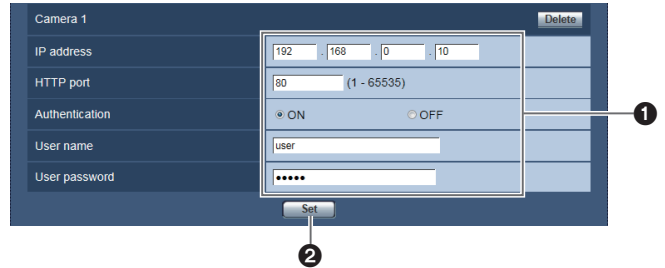
- The IP address of the Center Module can be checked on the Center Module screen. For details, refer to the Operating Instructions <Installation Guide>.

Important

- Be sure to change the username and password to ensure that the system is secure. For details, see "Configuring server settings" (p. 13).

■ Setup Instructions

This section describes basic operation procedures to set this unit with browser operations.



1 Input the necessary information into the settings.

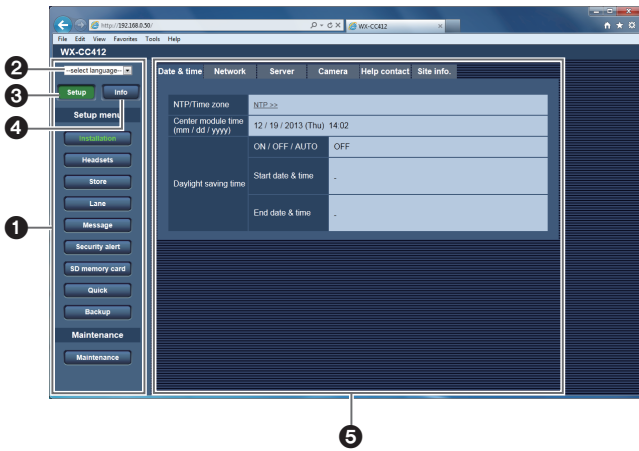
2 Click the [Set] button.

Important

- The settings will not be reflected unless the [Set] button is clicked.
- Do not click the button repeatedly. Doing so may result in the settings being set incorrectly.

Browser Operation

■ Operation Screen



❶ Menu panel

Displays the panel for each menu.
The menu panel displays the Setup menu and the Information menu.

❷ [select language] pull-down menu

Changes the display language.
Languages that are available are English and French.
The screen following authentication will be displayed in English.

❸ Setting button [Setup]

When selected, this button turns green and the menu panel displays the Setup menu panel. (on the right)

❹ Information display button [Info]

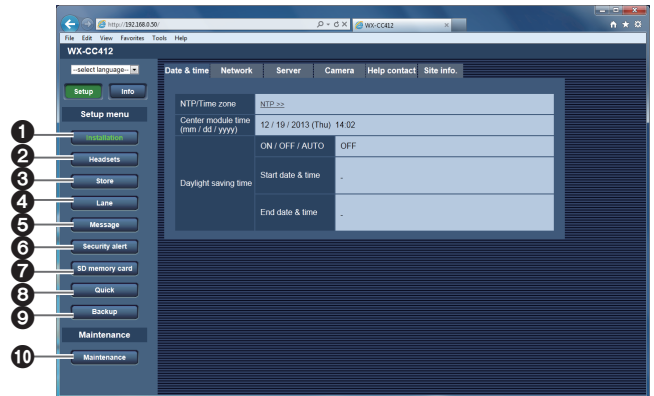
When selected, this button turns green and the menu panel displays the Information menu panel. (p. 33)

❺ Main area

Displays the screen corresponding to the button selected.

■ Setup Menu

When the [Setup] button is clicked, the menu panel displays the Setup menu panel.



Setup menu

❶ [Installation] button

This menu is used to configure and confirm settings related to the Center Module installation. (p. 11)

❷ [Headsets] button

This button is used to confirm the All-In-One Headsets or Belt Packs belonging to groups 1-6. (p. 17)

❸ [Store] button

This button is used to confirm store operation-related settings. (p. 17)

❹ [Lane] button

This button is used to confirm settings for each lane. (p. 19)

❺ [Message] button

This button is used to confirm settings for greeter messages, reminder messages and alert messages. The schedule settings can be confirmed for greeter messages and reminder messages. Sound source files to be used for the messages can be changed or downloaded. (p. 20)

❻ [Security alert] button

This button is used to confirm the settings of the operations to be performed when a security alert occurs. (p. 25)

Browser Operation

⑦ [SD memory card] button

This button is used to confirm the total storage capacity and remaining storage capacity on the SD card inserted into the Center Module. (p. 26)

⑧ [Quick] button

This button is used to confirm the operation settings that were set by touching the  (Quick Operation button) on the Center Module. (p. 27)

⑨ [Backup] button

This button is used to back up Center Module settings and the message voice source file. (p. 27)

Maintenance

⑩ [Maintenance] button

This button is used to perform various maintenance tasks.

Important

- The maintenance menu is for maintenance staff. Altering settings and performing operations using the maintenance menu may affect store operation.

■ Configuring and Confirming Settings at Installation

This section describes how to configure and confirm settings related to installation, such as date and time settings, network settings, each server setting, Network Camera settings, help contact and site information. To display this screen, click the [Installation] button in the Setup menu panel.

● Confirming the date and time setting [Date & time]

This function is used to confirm the date, time and daylight saving time settings for the Center Module. To display this screen, click the [Installation] button, then the [Date & time] tab. After authentication, the following screen will be displayed.



Date & time		Network	Server	Camera	Help contact	Site info.
NTP/Time zone	NTP>>					
Center module time (mm / dd / yyyy)	12 / 19 / 2013 (Thu) 14:29					
ON / OFF / AUTO		AUTO				
Daylight saving time	Start date & time	MONTH	DAY	Time		
		03	/ 2nd Sun	/ 02:00		
End date & time	MONTH	DAY	Time			
		11	/ 1st Sun	/ 02:00		

[NTP/Time zone]

Clicking on [NTP>>] displays the [Server] tab. The NTP server settings can be configured in the [Server] tab.

[Center module time]

Displays the current date and time of the Center Module. The date is displayed in the format of MONTH / DAY / YEAR. The time is displayed as a 24-hour clock.

[Daylight saving time ON/OFF/AUTO]

Displays the setting for daylight saving time.

ON: Set the time to daylight saving time. (Advance the current time by 1 hour)

OFF: Cancel daylight saving time.

AUTO: Daylight saving time is set based on the set date and time to start and end (Month, week, day of the week, time).

[Daylight saving time Start date & time], [Daylight saving time End date & time]

Displays the start date and time and end date and time when Daylight Saving time is set to AUTO.

Browser Operation

● Configuring network settings [Network]

This function is used to configure the network settings of the Center Module.

Click the [Installation] button, then the [Network] tab.

IPv4 Network

IPv4 network	
DHCP / Static	Static
MAC address	00-80-F0-6B-C4-8F
IP address	192.168.0.50
Subnet mask	255.255.255.0
Default gateway	192.168.0.1
DNS Auto / Manual	<input checked="" type="radio"/> Auto <input type="radio"/> Manual
Primary DNS server address	<input type="text"/>
Secondary DNS server address	<input type="text"/>
Line speed	Auto

Web server	
Connection	HTTP
HTTP port	80 (1 - 65535)
HTTPS port	443 (1 - 65535)

UPnP	
Auto port forwarding	<input checked="" type="radio"/> ON <input type="radio"/> OFF

[DHCP / Static]

Displays the DHCP of the Center Module. This setting can be changed through operations on the Center Module.

DHCP: Operating with the DHCP setting ON.

Static: Operating with the DHCP setting OFF (static IP address).

[MAC address]

Displays the MAC address of the Center Module.

[IP address]

Displays the IP address of the Center Module. This setting can be changed through operations on the Center Module.

[Subnet mask]

Displays the subnet mask of the Center Module. This setting can be changed through operations on the Center Module.

[Default gateway]

Displays the default gateway of the Center Module. This setting can be changed through operations on the Center Module.

[DNS Auto / Manual]

Set whether to retrieve the DNS server address automatically ("Auto") or input it manually ("Manual").

When set to "Manual", the DNS setting must be configured.

When using the DHCP function, if "DNS" is set to "Auto", the DNS server address will be retrieved automatically. Inquire with the system administrator for questions about settings.

Default setting: Manual

[Primary DNS server address], [Secondary DNS server address]

If "DNS" is set to "Manual", the IP address of the DNS server must be entered manually.

Inquire with the system administrator for questions about the DNS server IP address.

Default setting: None (blank)

[Line speed]

Displays the network transmission rate setting of the Center Module. This setting can be changed through operations on the Center Module.

Web server

[Connection]

Select the method for connecting to the Center Module.

HTTP: Can only connect by HTTP.

HTTPS: Can only connect by HTTPS.

Default setting: HTTP

[HTTP port]

Set the port number to be used in HTTP.

Settable port numbers: 1 to 65535

Default setting: 80

[HTTPS port]

Set the port number to be used in HTTPS.

Settable port numbers: 1 to 65535

Default setting: 443

Important

- If Web server settings are altered, the Center Module will restart automatically.
- If HTTPS is selected, the Center Module will automatically generate an SSL server certificate. This is only compatible with SSL self-certification.
- The following port numbers cannot be used. (Excluding the port number set in the default settings.)
20, 21, 23, 25, 42, 53, 67, 68, 69, 80, 110, 123, 161, 162, 443, 995, 10669, 10670

Browser Operation

UPnP

The Center Module is compatible with UPnP (Universal Plug and Play). Using UPnP function, you can configure the following settings automatically.

Set the router port forwarding function. (A router that is compatible with UPnP is required.) This setting is useful for accessing the Center Module via the Internet.

[Auto port forwarding]

Set whether or not to use the router's port forwarding function with the ON and OFF radio buttons. To use the auto port forwarding function, the router being used must be the UPnP compatible and UPnP function must be enabled.

Default setting: OFF

Note

- Auto port forwarding may change the port number. If the port number has been changed, the Center Module port number registered to the PC must also be changed.
- To check if auto port forwarding has been set correctly, click the [Status] tab of the [Maintenance] button in the Setup menu panel and confirm that the [UPnP] status is [Enabled].

Important

- If UPnP settings are altered, the Center Module will restart automatically.
- When changing port forwarding settings, check the status of the router using the Operating Instructions for the router.

● Configuring server settings [Server]

This function is used to configure the settings of the server connected to the Center Module.

Click the [Installation] button, then the [Server] tab.

NTP

Configure the NTP server settings, such as the NTP server address and port number.

Important

- If a more accurate time setting is needed for system operation, use the NTP server.

[Default] button

This button is used to restore the NTP settings to the default settings.

[Time adjust]

Set whether or not to retrieve the time from the NTP server.

ON: Synchronize with the NTP server and automatically adjust the date and time of the Center Module.

OFF: Do not synchronize with the NTP server.

Default setting: OFF

[NTP server address (Manual / Auto)]

When [ON] is selected for [Time adjust], a method for retrieving the NTP address must be selected.

Manual: Input the NTP server address into the [NTP server address] to set.

Auto: Retrieve the NTP server address from the DHCP server.

Default setting: Manual

Important

- When retrieving the "NTP server address" from the DHCP server, the DHCP function must be enabled through operations on the Center Module.

Browser Operation

[NTP server address]

If "Manual" is selected for [NTP server address (Manual / Auto)], enter the NTP server IP address or host name manually.

Number of characters: 1 to 128

Types of characters: alphanumeric, characters -.

Default setting: None (blank)

Important

- When entering the host name into the "NTP server address", the DNS setting must be configured on the [Network] tab of the [Installation] button on the Setup menu panel.

[NTP port]

Input the NTP server port number.

Settable port numbers: 1 to 65535

Default setting: 123

Important

- The following port numbers cannot be used. (Excluding the port number set in the default settings.)
20, 21, 23, 25, 42, 53, 67, 68, 69, 80, 110, 123, 161, 162, 443, 995, 10669, 10670

[Time adjustment interval time]

Select the interval for retrieving the time from the NTP server (1 hour units, from 1 to 24 hours).

Default setting: 1h

[Time zone]

Select the time zone corresponding to the region in which this unit is being used.

Default setting: GMT-06:00 Central Standard Time

SMTP

Configure the settings of the email server for sending emails from the Center Module.

[Default] button

This button is used to restore the SMTP settings to the default settings.

[SMTP server address]

Input the IP address or host name of the SMTP server for sending email.

Number of characters: 1 to 128

Types of characters: alphanumeric, characters -.

Default setting: None (blank)

[SMTP server port]

Input the port number for sending email.

Settable port numbers: 1 to 65535

Default setting: 25

Important

- The following port numbers cannot be used. (Excluding the port number set in the default settings.)
20, 21, 23, 25, 42, 53, 67, 68, 69, 80, 110, 123, 161, 162, 443, 995, 10669, 10670

[Authentication]

• Type

Select one of the following authentication methods for sending email.

None: No authentication

POP before SMTP:

Authenticate the POP servers for receiving email before sending email.

SMTP: Authenticate the SMTP server.

Default setting: None

Note

- If unsure of which authentication type to use for sending email, inquire with the system administrator.

• User name

Input the username for accessing the server.

Number of characters: 0 to 32

Types of characters: alphanumeric, characters
!#\$%&'()*=-~`{|}<>?_~^[]/@*.,:;+¥

Default setting: None (blank)

• User password

Input the password for accessing the server.

Number of characters: 0 to 32

Types of characters: alphanumeric, characters
!#\$%&'()*=-~`{|}<>?_~^[]/@*.,:;+¥

Default setting: None (blank)

[POP3 server address]

If [POP before SMTP] is selected for [Authentication Type], input the POP3 server IP address or host name manually.

Number of characters: 1 to 128

Types of characters: alphanumeric, characters -.

Default setting: None (blank)

Browser Operation

[Sender's E-mail address]

Input the sender's email address. The email address entered will appear in the "From" line on the email being sent.

Number of characters: 3 to 128

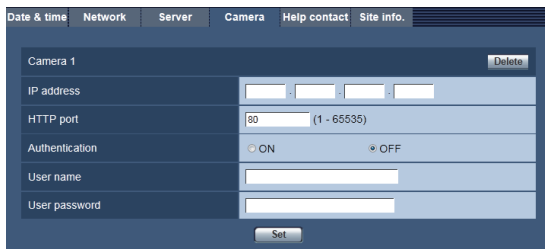
Types of characters: alphanumeric, characters @ . _ -

Default setting: None (blank)

● Setting Network Cameras connected to the unit [Camera]

This tab is used to set Network Cameras displayed on the LCD display of the Center Module. Setting Network Cameras enables camera images from vehicle detectors to be displayed on the Center Module in tandem with security alerts.

Click the [Installation] button, then the [Camera] tab.



Camera 1 to 4

A maximum of four Network Cameras can be connected to the Center Module. This section describes how to set Network Cameras connected to the unit.

Important

- Network Cameras that can be connected to the Center Module are Panasonic i-pro series Network Cameras.
- Be sure to set HTTP for the Network Camera connection method setting.
- Configure the Network Cameras to the following settings:
 - Aspect ratio: 4:3
 - Image quality: standard

[Delete] button

This button is used to restore the Network Camera settings to the default settings.

[IP address]

Input the IP address of the Network Cameras that are connected to the unit.

Default setting: None (blank)

[HTTP port]

Input the port number of the Network Cameras that are connected to the unit.

Settable port numbers: 1 to 65535

Default setting: 80

[Authentication]

Configure this setting if the user authentication setting is set to "ON".

ON: User authentication will be required when connecting to Network Cameras.

OFF: User authentication will not be required when connecting to Network Cameras.

[User name]

If [ON] is selected for [Authentication], input the username for accessing the Network Cameras.

Number of characters: 0 to 32

Default setting: None (blank)

[User password]

If [ON] is selected for [Authentication], input the password for accessing the Network Cameras.

Number of characters: 0 to 32

Default setting: None (blank)

Browser Operation

● Setting Help contact [Help contact]

This tab is used to check the telephone number and configure the email transmission settings for the Help contact screen displayed on the LCD display of the Center Module.

Click the [Installation] button, then the [Help contact] tab.

[Telephone]

This field displays the telephone number. This setting can be changed through operations on the Center Module unit.

Configuring Help contact email transmission settings

This area is used to configure the email to be sent from the LCD display Help contact screen.

[Destination E-mail address]

Set the destination email addresses. The same message can be sent to up to 5 email addresses.

Number of characters: 3 to 128

Types of characters: alphanumeric, characters @ . _ -

[E-mail subject]

Input the subject of the email.

Number of characters: 0 to 50

[E-mail body]

Input the body of the email.

Number of characters: 0 to 200

Note

- The SMTP server must be set before an email can be sent. To set the SMTP server, click the [Installation] button, then the [Server] tab.
- The following substitute characters can be used in the email body. The substitute characters will be replaced with the corresponding character string when the email is sent.

Substitute characters	Character string after substitution
%d%	Help contact email sent date e.g. 05
%M%	Help contact email sent month (alphabetical character) e.g. Feb
%m%	Help contact email sent month (numerical character) e.g. 02
%Y%	Help contact email sent year (four-digit) e.g. 2014
%y%	Help contact email sent year (the last two digits) e.g. 14
%t%	Help contact email sent time e.g. 15:00:00
%i%	IP address of the Center Module
%s%	Information entered in Site information

Important

- When using the Help contact email function, confirm that emails can be sent correctly in advance when the unit is installed.

● Setting Site information [Site info.]

This tab is used to input information particular to the store in which the unit is installed, such as the contact number for the store and management information. This information is used when viewing store information from a browser. This information can only be set and viewed with a browser.

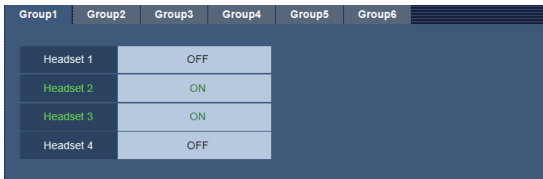
Click the [Installation] button, then the [Site info.] tab.

Number of characters: 0 to 200

Browser Operation

■ Confirming the group settings for All-In-One Headsets and Belt Packs

This function is used to confirm the group settings for All-In-One Headsets and Belt Packs. This setting can be changed through operations on the Center Module.
To display this screen, click the [Headsets] button in the Setup menu panel.



Group1	Group2	Group3	Group4	Group5	Group6
Headset 1					
Headset 2					
Headset 3					
Headset 4					

Click the tab of the group you wish to view (Group 1 to Group 6).

All-In-One Headsets and Belt Packs that are in the group are displayed as “ON” in green, while those that are not are displayed as “OFF” in black.

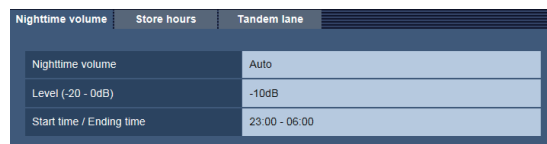
■ Confirming store settings

This screen is used to confirm the nighttime volume, store hours and tandem lanes (WX-CC412 only).
To display this screen, click the [Store] button in the Setup menu panel.

● Confirming nighttime volume settings [Nighttime volume]

This tab is used to confirm nighttime volume settings. This setting can be changed through operations on the Center Module.

Click the [Store] button, then the [Nighttime volume] tab.



Nighttime volume	Store hours	Tandem lane
Nighttime volume		Auto
Level (-20 - 0dB)		-10dB
Start time / Ending time		23:00 - 06:00

[Nighttime volume]

Displays whether or not nighttime volume is being used.

- OFF: The volume level of the order post speaker is unchanged.
- ON: The volume level of the order post speaker is reduced.
- Auto: The volume level of the voice output from the order post speaker is reduced automatically every day, based on the set time to start and time to end the nighttime volume function.

[Level (-20 to 0 dB)]

Displays the nighttime volume level.

[Start time / Ending time]

Displays the time to start and end the nighttime volume function. If “Auto” is set for nighttime volume, the volume will be controlled according to these time settings.

Browser Operation

● Confirming store hours [Store hours]

This tab is used to confirm store hours settings. This setting can be changed through operations on the Center Module. Click the [Store] button, then the [Store hours] tab.

Store hours		
Store hours	Auto	
Closed message		
Message	G05 Closed Greeter	
Day hours		
Mon	07:00 - 23:00	
Tue	07:00 - 23:00	
Wed	07:00 - 23:00	
Thu	07:00 - 23:00	
Fri	07:00 - 23:00	
Sat	-	
Sun	-	
Holiday message		
Message	G04 Halloween Greeter	

Store hours

[Store hours]

Displays whether or not store hours is being used.

- OFF:** When the vehicle detector is ON, the greeter message set in the scheduler is played back.
- Auto:** When the vehicle detector is ON within business hours, the greeter message set in the scheduler is played back. If it is outside business hours, the closing greeter message is played back.
- Closed:** When the vehicle detector is ON, the closing greeter message is always played back. Use this function if the lane is closed, etc.
- Holiday:** When the vehicle detector is ON, the holiday greeter message is always played back. Use this function when playing a special greeter message on Christmas, Halloween, etc.

Closed message

[Message]

Displays the greeter message that is played when the store is closed (the store hours settings are Closed or AUTO).

[Day hours]

Displays the store hours for each day of the week.

Holiday message

[Message]

Displays the greeter message that is played when the [Store hours] setting is set to Holiday.

● Confirming tandem lanes [Tandem lane] (WX-CC412 only)

Tandem lane	
Tandem lane	OFF
Message	Pull Forward

[Tandem lane]

This tab displays the settings for tandem lanes. This setting can be changed through operations on the Center Module.

ON: Tandem lane

OFF: Dual lane

[Message]

Displays the greeter message that is played from the Lane B order post speaker when the Lane A vehicle detector is OFF and the Lane B vehicle detector is ON.

Note

- See "Operation" (p. 4) for details on tandem lanes.

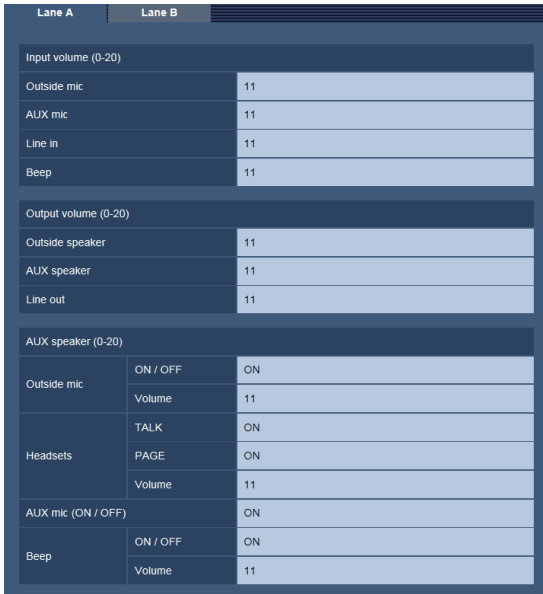
Browser Operation

■ Configuring and confirming settings for each lane

This tab is used to configure and confirm settings for each lane.

To display this screen, click the [Lane] button in the Setup menu panel.

To configure and confirm settings for Lane B, click the [Lane B] tab. (WX-CC412 only)



[Input volume (0-20)]

Displays the input volume for each All-In-One Headset and Belt Pack and the order post speaker. The volume range is from 0 to 20. This setting can be changed through operations on the Center Module.

Outside mic: Displays the volume of the order post microphone.

Aux mic: Displays the volume of the kitchen microphone.

Line in: Displays the volume of the line input.

Beep: Displays the volume of the beep tone.

[Output volume (0-20)]

Displays each output volume. The volume range is from 0 to 20. This setting can be changed through operations on the Center Module.

Outside speaker: Displays the volume of the order post speaker.

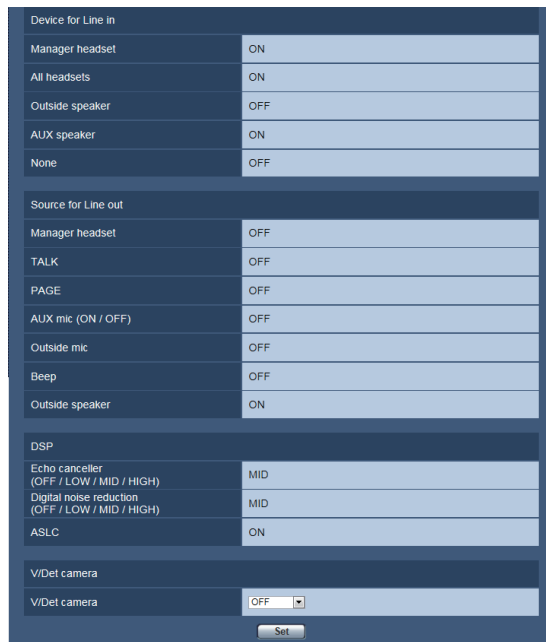
Aux speaker: Displays the volume of the kitchen speaker.

Line out: Displays the volume of the line output.

[Aux speaker (0-20)]

Displays the input sound source file and the volume of the file to be output to the kitchen speaker. This setting can be changed through operations on the Center Module.

Outside mic	ON/OFF	Displays whether or not the voice of the order post microphone will be output to the kitchen speaker.
	Volume	Displays the volume of the order post microphone output to the kitchen speaker.
Headsets	TALK	Displays whether or not the [TALK] voice from the All-In-One Headsets or Belt Packs will be output to the kitchen speaker.
	PAGE	Displays whether or not the [PAGE] voice from the All-In-One Headsets or Belt Packs will be output to the kitchen speaker.
	Volume	Displays the volume of the voice from the All-In-One Headsets or Belt Packs to be output to the kitchen speaker.
AUX mic (ON/OFF)		Displays whether or not the voice of the kitchen microphone will be output to the kitchen speaker.
Beep	ON/OFF	Displays whether or not the beep tone will be output to the kitchen speaker.
	Volume	Displays the volume of the beep tone output to the kitchen speaker.



[Device for Line in]

Displays the output destination for line input. Line input will be output to all All-In-One Headsets or Belt Packs and the kitchen speaker.

You can change the output device for [LINE IN].

For details, contact the store where you purchased this unit.

[Source for Line out]

Displays the input sound file source for line output. The output destination for the line sound source file will be the same as that of the sound source file output from the order post speaker.

You can change the audio source for [LINE OUT].

For details, contact the store where you purchased this unit.

Browser Operation

[DSP]

This section displays the settings for the three functions involved in voice signal processing (echo canceller, digital noise reduction and ASLC).

Echo Canceller: Displays the echo suppression level. (OFF/LOW/MID/HIGH)

Digital noise reduction:

Displays the noise suppression level. (OFF/LOW/MID/HIGH)

ASLC: Displays whether or not Auto Speaker Level Control is being used.

[V/Det camera]

Images from Network Cameras can be displayed on the Center Module LCD display in tandem with the vehicle detector. Select the Network Camera(s) to be displayed on the LCD display.

OFF: The Network Camera(s) are not coupled to the vehicle detector.

Camera 1/2/3/4: When the vehicle detector is ON, the Network Cameras are displayed on the LCD display in tandem with the vehicle detector.

Default setting: OFF

Note

- Be sure to set a camera that is connected in advance when outputting the NW camera image. To set a camera that is connected, click the [Installation] button in the Setup menu panel, then the [Camera] tab.

■ Confirming message settings

This section is used to confirm the settings for each type of message and the schedule for messages.

To display this screen, click the [Message] button in the Setup menu panel.

● Confirming greeter message settings [Greeter message]

This tab is used to confirm the settings of the greeter message played when the vehicle detector is ON. This setting can be changed through operations on the Center Module. Click the [Message] button, then the [Greeter message] tab.

Greeter message	Greeter schedule	Reminder message	Reminder schedule	Alert message
ON / OFF	ON			
Volume (0 - 20)	11			
Delay time (0-10s)	0s			
Destination	All headsets	OFF		
	AUX speaker	OFF		
No.	Message name	Upload	Download	
G01	Breakfast Greeter	Upload	Download	
G02	Lunch Greeter	Upload	Download	
G03	Dinner Greeter	Upload	Download	

[ON/OFF]

Displays whether or not greeter message is being used.

OFF: The greeter message is not played back.

ON: The greeter message is played back.

[Volume (0 - 20)]

Displays the volume of the greeter message.

The volume range is from 0 to 20.

[Delay time (0 - 10s)]

Displays the time delay before playing the greeter message when the vehicle detector is ON. The range is 0 to 10 seconds.

[Destination]

Displays broadcast destinations other than the order post speaker from which the greeter message will be played.

● All headsets

OFF: The greeter message is not broadcast to any All-In-One Headset or Belt Pack.

ON: The greeter message is broadcast to all All-In-One Headsets or Belt Packs.

● AUX speaker

OFF: The greeter message is not broadcast to the kitchen speaker.

ON: The greeter message is broadcast to the kitchen speaker.

Browser Operation

Message list

Displays the settings for each greeter message. This setting can be changed through operations on the Center Module.

[No.]

Displays the number of the greeter message.

[Message name]

Displays the name of the greeter message.

[Upload] button

This button is used to upload a sound source file to replace the sound source file that is currently being used as the greeter message.

[Download] button

This button is used to download the sound source file being used as the greeter message from the Center Module. The button is disabled when there is no sound source file.

Important

- Sound source files are in the following format. Use compatible software when playing or editing files using a PC.
Format: ADPCM (G.726)
Sampling frequency: 8 kHz
Quantization bit rate: 4 bit
Sound source files that can be uploaded must be in the above format and no longer than 20 seconds.

● Confirming greeter message schedule settings [Greeter schedule]

This tab is used to confirm greeter message schedule settings. Click the [Message] button, then the [Greeter schedule] tab.

No.	Start time	Message
1	07:00	G01 Breakfast Greeter
2	11:00	G02 Lunch Greeter
3	17:00	G03 Dinner Greeter
4	23:00	G06 Midnight Greeter

[Days of the week]

The schedule for the selected day of the week is displayed. The schedule displays the start time for playing the greeter message and the message that will be played.

Schedule list

Displays the greeter message start times in a list. This setting can be changed through operations on the Center Module.

[No.]

Displays the number of the schedule.

[Start time]

Displays the start time of the greeter message.

[Message]

Displays the message number and name of the greeter message that will start.

Browser Operation

● Confirming reminder message settings [Reminder message]

This tab is used to confirm the reminder message that is played at fixed times to urge the store personnel to work. Click the [Message] button, then the [Reminder message] tab.

Greater message	Greater schedule	Reminder message	Reminder schedule	Alert message	
ON / OFF		ON			
Volume (0 - 20)		11			
No.	Message name	Destination Group	AUX	Upload	Download
R01	Wash Hands	All headsets	ON	<input type="button" value="Upload"/>	<input type="button" value="Download"/>
R02	Cleaning Time	All headsets	ON	<input type="button" value="Upload"/>	<input type="button" value="Download"/>
R03	Restroom Cleaning	All headsets	ON	<input type="button" value="Upload"/>	<input type="button" value="Download"/>

[ON/OFF]

Displays whether or not reminder message is being used. This setting can be changed through operations on the Center Module.

[Volume (0 - 20)]

Displays the volume of the reminder message. The volume range is from 0 to 20. This setting can be changed through operations on the Center Module.

Message list

Displays the settings for each reminder message. This setting can be changed through operations on the Center Module.

[No.]

Displays the number of the reminder message.

[Message name]

Displays the name of the reminder message.

[Destination]

Displays the broadcast destinations for the reminder message.

● Group

Displays the broadcast destination group for the reminder message.

All Headsets: The reminder message is broadcast to all All-In-One Headsets or Belt Packs.

Group number: The reminder message is broadcast to the All-In-One Headsets or Belt Packs in the selected group(s).

● AUX

Displays whether or not the reminder message will be output to the kitchen speaker.

OFF: The reminder message is not output to the kitchen speaker.

ON: The reminder message is output to the kitchen speaker.

[Upload] button

This button is used to upload a sound source file to replace the sound source file that is currently being used as the reminder message.

[Download] button

This button is used to download the sound source file being used as the reminder message from the Center Module. The button is disabled when there is no sound source file.

Important

- Sound source files are in the following format. Use compatible software when playing or editing files using a PC.
Format: ADPCM (G.726)
Sampling frequency: 8 kHz
Quantization bit rate: 4 bit
Sound source files that can be uploaded must be in the above format and no longer than 20 seconds.

Browser Operation

● Confirming reminder message schedule settings [Reminder schedule]

This tab is used to confirm reminder message schedule settings. Click the [Message] button, then the [Reminder schedule] tab.

No.	Start - Ending time	Interval	Interval time	Message
1	07:00 - 22:00	ON	01:00	R01:Wash Hands
2	10:30 - ----	OFF	-	R02:Cleaning Time
3	15:30 - ----	OFF	-	R02:Cleaning Time
4	22:00 - ----	OFF	-	R04:Closed Preparation

[Days of the week]

The schedule for the selected day of the week is displayed. The schedule displays the time to play back the reminder message and the message that will be played.

Schedule list

Displays the reminder message playback schedules in a list. This setting can be changed through operations on the Center Module.

[No.]

Displays the number of the schedule.

[Start – Ending time]

Displays the start time for playing back the reminder message and the time to stop repeating playback.

Note

- The ending time is only displayed when the Interval is ON. It is displayed as “-” when the Interval is OFF.

[Interval]

Displays whether or not to repeat playback of the reminder message.

OFF: The reminder message is played back only 1 time, at the Start Time.

ON: The reminder message is played back repeatedly at fixed intervals, beginning from the Start Time.

[Interval time]

Displays the repeating interval for playing back the reminder message. You can set this from 00:00 to 23:59 in increments of 1 minute.

[Message]

Displays the message number and name of the reminder message that will be played.

Browser Operation

● Confirming alert message settings [Alert message]

This tab is used to confirm the alert message to be played during a security alert. Click the [Message] button, then the [Alert message] tab.

Greeter message	Greeter schedule	Reminder message	Reminder schedule	Alert message	
ON / OFF		ON			
Volume (0 - 20)		11			
Delay time (0-10s)		0s			
No.	Message name	Destination Group	AUX	Upload	Download
A01	Door Open	All headsets	ON	<input type="button" value="Upload"/>	<input type="button" value="Download"/>
A02	Cashier Open	All headsets	ON	<input type="button" value="Upload"/>	<input type="button" value="Download"/>
A03	Headset Alert	All headsets	ON	<input type="button" value="Upload"/>	<input type="button" value="Download"/>

[ON/OFF]

Displays whether or not alert message is being used. This setting can be changed through operations on the Center Module.

OFF: The alert message is not played back.

ON: The alert message is played back.

[Volume (0 - 20)]

Displays the volume of the alert message. The volume range is from 0 to 20. This setting can be changed through operations on the Center Module.

[Delay time (0 - 10s)]

Displays the delay time after the occurrence of an alert until the alert message is played back. The range is 0 to 10 seconds.

Message list

Displays the settings for each alert message. This setting can be changed through operations on the Center Module.

[No.]

Displays the number of the alert message.

[Message name]

Displays the name of the alert message.

[Destination]

● Group

Displays the broadcast destination group for the alert message.

All Headsets: The alert message is broadcast to all All-In-One Headsets or Belt Packs.

Group number: The alert message is broadcast to the All-In-One Headsets or Belt Packs in the selected group(s).

● AUX

Displays whether or not the alert message will be output to the kitchen speaker.

OFF: The alert message is not output to the kitchen speaker.

ON: The alert message is output to the kitchen speaker.

[Upload] button

This button is used to upload a sound source file to replace the sound source file that is currently being used as the alert message.

[Download] button

This button is used to download the sound source file being used as the alert message from the Center Module. The button is disabled when there is no sound source file.

Important

- Sound source files are in the following format. Use compatible software when playing or editing files using a PC.
Format: ADPCM (G.726)
Sampling frequency: 8 kHz
Quantization bit rate: 4 bit
Sound source files that can be uploaded must be in the above format and no longer than 20 seconds.

Browser Operation

■ Confirming the security alert settings

This screen is used to confirm the operations to be performed when a security alert notice is received from button F of an All-In-One Headset or Belt Pack or from alert inputs 1 to 4.

To display this screen, click the [Security alert] button in the Setup menu panel.

Trigger	Message	Camera monitor	Device control	Audio recording	Alert input delay time	E-mail
F button	A03 Headset Alert	OFF	OFF	ON	-	OFF
Alert 1	A01 Door Open	Camera 1	OFF	-	00:00	OFF
Alert 2	A02 Cashier Open	OFF	ON	-	02:00	OFF
Alert 3	OFF	OFF	ON	-	00:10	OFF
Alert 4	OFF	OFF	OFF	-	00:00	ON

Mail for F button

Destination E-mail address

Address 1:

Address 2:

Address 3:

Address 4:

Address 5:

E-mail subject:

E-mail body:

List of alerts

Displays the types of security alerts and the operations to perform in the event of a security alert.

[Trigger] column

Displays the types of security alerts.

[Message] column

Displays the alert message to be played during each type of security alert. This setting can be changed through operations on the Center Module.

OFF: The alert message is not played back.

Message number: The alert message is played back.

[Camera monitor] column

Displays the number of the Network Camera that is displayed on the LCD display during each type of security alert. This setting can be changed through operations on the Center Module.

OFF: The image of the Network Camera is not displayed on the LCD display.

Camera number: The image of the Network Camera is displayed on the LCD display.

[Device control] column

Displays whether or not to control external control outputs during each type of security alert. This setting can be changed through operations on the Center Module.

OFF: External control outputs are not controlled.

ON: External control outputs are controlled.

[Audio recording] column

Displays whether or not to record communications onto the SD card when a security alert notice is received from button F of an All-In-One Headset or Belt Pack. This setting can be changed through operations on the Center Module.

OFF: Communications are not recorded.

ON: Communications are recorded.

[Alert input delay time] column

Displays the delay time until sounding a security alert from alert inputs 1 to 4. Can be set from 0 to 29 minutes 59 seconds in increments of 1 second.

[E-mail] column

Set whether or not to send an e-mail when each security alert occurs and ends.

ON: An e-mail will be sent based on the e-mail settings for the alert occurrence and end of alert.

OFF: An e-mail will not be sent for the alert occurrence and end of alert.

Default setting: OFF

Mail for F button

Set the details of the e-mail to be sent when a security alert occurs from button F of an All-In-One Headset or Belt Pack and when the alert ends. This is enabled when an e-mail is set to be sent upon receiving button F of an All-In-One Headset or Belt Pack in the list of alerts.

[Destination E-mail address]

Set the destination email addresses. The same message can be sent to up to 5 email addresses.

Number of characters: 3 to 128

Types of characters: alphanumeric, characters @ . _ -

[E-mail subject]

Input the subject of the email.

Number of characters: 0 to 50

[E-mail body]

Input the body of the email.

Number of characters: 0 to 200

Browser Operation

Note

- The SMTP server must be set before an email can be sent. To set the SMTP server, click the [Installation] button, then the [Server] tab.
- The following substitute characters can be used in the email body. The substitute characters will be replaced with the corresponding character string when the email is sent.

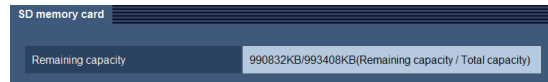
Substitute characters	Character string after substitution
%d%	Date of alert e.g. 05
%M%	Month of alert (alphabetical character) e.g. Feb
%m%	Month of alert (numerical character) e.g. 02
%Y%	Year of alert (four-digit) e.g. 2014
%y%	Year of alert (the last two digits) e.g. 14
%t%	Time of alert e.g. 15:00:00
%a%	Status of alert When an alert starts: Alert Happened When an alert ends: Alert Stopped
%p%	Origin of alert Alert terminal: Alert Input* (* is the terminal number) All-In-One Headsets and Belt Packs: "Headset"
%i%	IP address of the Center Module
%s%	Information entered in Site Information

Mail for Alert * (*: 1 to 4)

Set the details of the e-mail to be sent when a security alert occurs from an alert input and when the alert ends. For setting details see, "Mail for F button".

■ Confirming the remaining capacity and the total capacity of the SD card

This tab is used to confirm the total capacity and remaining capacity on an SD card inserted into the Center Module. To display this screen, click the [SD memory card] button in the Setup menu panel.




[Remaining capacity]

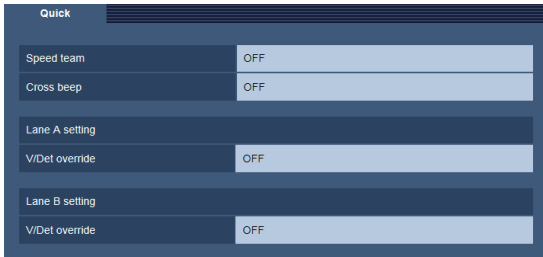
Displays the remaining capacity of the SD card. Displayed as "Remaining capacity / Total capacity".

If there is no SD card inserted, this field displays "-----KB/-----KB".

Browser Operation

■ Confirming quick operation settings

This button is used to confirm the operation settings that were set by touching the  (Quick Operation button) on the Center Module. This setting can be changed through operations on the Center Module. To display this screen, click the [Quick] button in the Setup menu panel.



[Speed team]

Displays the Speed team settings.

OFF: No Speed team operation.

ON: The vehicle detectors are shut off and Speed team operation is in effect.

[Cross beep] (WX-CC412 only)

Displays the Cross beep settings.

OFF: A beep tone is only heard when the vehicle detector of the corresponding lane for the All-In-One Headset or Belt Pack is ON.

ON: A beep tone is also heard when the vehicle detector of the other lanes in addition to the corresponding lane for the All-In-One Headset or Belt Pack are ON.

Lane A setting

Lane B setting (WX-CC412 only)

[V/Det override]

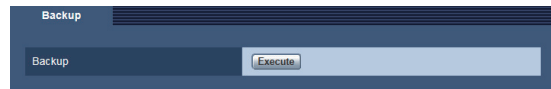
Displays the V/Det override settings.

OFF: Vehicle detectors turn ON when a vehicle approaches.

ON: The vehicle detectors are virtually ON.

■ Backing up settings

This tab is used to back up Center Module settings and messages. To display this screen, click the [Backup] button in the Setup menu panel.



[Execute] button

This button is used to back up Center Module settings and message voice source files to the PC.

Note

- Data that has been backed up is extracted to the following folder on the SD card. When restored on the Center Module, the settings can be restored to those used at the time of backing up.
SD card route:
\\PRIVATE\\PANA_GRP\\PSN\\DWCS\\BACKUP
- Message voice source files cannot be backed up if an SD card is not inserted.

Browser Operation

■ Performing maintenance on the Center Module

This screen is used to check the status of and perform maintenance on each device. The maintenance menu is for maintenance staff.

To display this screen, click the [Maintenance] button in the Setup menu panel.

● Checking the Center Module [Status]

This tab displays the status of the Center Module DECT ID, MAC address and UPnP.

Click the [Maintenance] button, then the [Status] tab.

The screenshot shows a web interface with a top navigation bar containing tabs: Status, Recorded data, Log, Update, User mng., and System alert. The 'Status' tab is active. Below the navigation bar, there are several sections:

- DECT ID:** A table with two rows: 'Lane A' with value '0000000000' and 'Lane B' with value '0000000000'.
- MAC address:** A single row with value '00-00-00-00-00-00'.
- UPnP:** A section containing:
 - HTTP:** A table with 'Port number' (80) and 'Status' (Disabled).
 - HTTPS:** A table with 'Port number' (443) and 'Status' (-).
- Router global address:** A single row with value '-'.
- Reboot:** A button labeled 'Reboot'.

[DECT ID]

Displays the DECT ID of the Center Module.

[MAC address]

Displays the MAC address of the Center Module.

UPnP

[HTTP]

Displays the information for an HTTP connection.

- **[Port number]**
Displays the port number set for port forwarding in UPnP.
- **[Status]**
Displays the port forwarding status. Displays “-” during an HTTPS connection.

[HTTPS]

Displays the information for an HTTPS connection.

- **[Port number]**
Displays the port number set for port forwarding in UPnP.
- **[Status]**
Displays the port forwarding status. Displays “-” during an HTTP connection.

[Router global address]

Displays the global address of the router.

Browser Operation

Important

- Check the [HTTP Status] / [HTTPS Status] after 10 minutes have passed since starting up the router and Center Module.
- The following chart shows the meaning and action to take for each port forwarding [HTTP Status] / [HTTPS Status].

Message	Meaning	Action
— (no message)	Connected without port forwarding.	To change the connection type, click the [Installation] button, then the [Network] tab and set the connection type.
Disabled	Internet publishing has not been set up for a Center Module that is using the router UPnP function.	Click the [Installation] button, then the [Network] tab and set “Auto port forwarding” to “ON” in “UPnP”.
Enabled	Internet publishing has been set up properly for a Center Module that is using the router UPnP function.	—
Setting	Automatic port forwarding is being set up for a Center Module that is using the router UPnP function.	Wait for the router to finish setting up.
Deleting	After disabling automatic port forwarding for a Center Module that is using the router UPnP function, the UPnP settings of the router are being deleted.	Wait for the system to finish deleting the router UPnP settings.
Failed to set	The router is not UPnP compatible, or the UPnP function has not been set.	<ul style="list-style-type: none"> • The UPnP function of the router has been disabled. Refer to the instruction manual for the router to enable the UPnP function. • The router does not have a UPnP function. Set port forwarding according to the instruction manual for the router.
Failed to delete	After changing to a setting where Internet publishing is not set for a Center Module that is using the router UPnP function, the system failed to delete the UPnP settings of the router.	<ul style="list-style-type: none"> • The power for the router has been turned off. Turn on the power for the router, then restart the Center Module. • If the network status for the Center Module reads “Static”, the network settings are incorrect. Confirm the default gateway and subnet mask settings for the Center Module network. • Some routers may not work with the Center Module, even if they are UPnP compatible and have been enabled, because they are not compatible with the Center Module. In such cases, set port forwarding according to the instruction manual for the router.

[Reboot]

Clicking the [Reboot] button restarts the Center Module.

Important

- When the Center Module is rebooted from a browser, the Center Module will restart without displaying a warning on the LCD display. Be sure to check the operational status before rebooting from a browser.

Browser Operation

● Retrieving TALK & PAGE Recording sound source files [Recorded data]

This tab displays sound source files from TALK & PAGE Recording that were recorded during a security alert by holding down button F of an All-In-One Headset or Belt Pack. Click the [Maintenance] button, then the [Recorded data] tab.



[Delete] checkbox

Selects the checkboxes of all TALK & PAGE Recording sound source files. Delete the sound source files that are selected by clicking the [Delete] button.

[File] column

Displays the filename of the sound source file.

[Lane] column

Displays the lane for TALK & PAGE Recording.

[Download] button

This button is used to download a TALK & PAGE Recording file from the Center Module.

[Delete] button

This button is used to delete sound source files with checkboxes selected.

Important

- Sound source files are in the following format. Use compatible software when playing or editing files using a PC.
Format: ADPCM (G.726)
Sampling frequency: 8 kHz
Quantization bit rate: 4 bit
Sound source files that can be uploaded must be in the above format and no longer than 20 seconds.

● Retrieving log data [Log]

This tab is used to download the operational log of the Center Module. Click the [Maintenance] button, then the [Log] tab.



[Download] button

This button is used to download the log file.

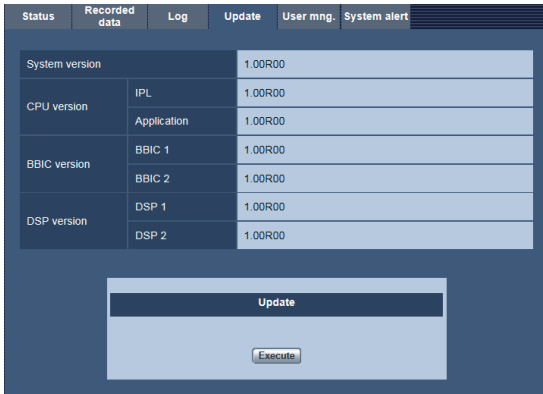
Important

- Note that Panasonic cannot respond to inquiries about log data.

Browser Operation

● Confirming the software version [Update]

This tab is used to confirm the software version. Software version updates can also be performed from this screen. Click the [Maintenance] button, then the [Update] tab.



[System version]

Displays the system version.

[CPU version]

Displays the CPU version.

[BBIC version]

Displays the BBIC version.

[DSP version]

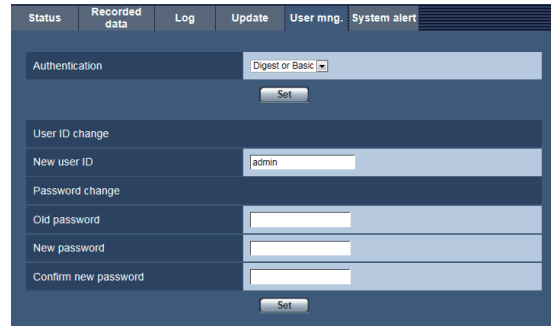
Displays the DSP version.

[Execute] button

This button is used to update the version of the Center Module software.

● Setting authentication [User mng.]

This tab is used to set authentication for accessing the Center Module from a browser. Click the [Maintenance] button, then the [User mng.] tab.



[Authentication]

This pull-down menu is used to set the authentication type for user authentication.

Digest or Basic : Use digest authentication or basic authentication.

Digest: Use digest authentication.

Basic: Use basic authentication.

Default setting: Digest or Basic

Note

- After changing [Authentication] settings, close the web browser and re-access the Center Module.

User ID change

[New user ID]

Displays the current user ID. To change the user ID, input a new username.

Number of characters: 4 to 32

Types of characters: alphanumeric, characters
!#\$%&'()*=-~`{|}<>?_~^[]/@*.,+*

Browser Operation

Password change

[Old password]

Input the current password.

Number of characters: 4 to 32

Types of characters: alphanumeric, characters
!#\$%&'()*~!{}<>?_~^[]/@*.,;:;+¥

[New password]

Input the new password.

Number of characters: 4 to 32

Types of characters: alphanumeric, characters
!#\$%&'()*~!{}<>?_~^[]/@*.,;:;+¥

[Confirm new password]

Input the new password for confirmation.

Number of characters: 4 to 32

Types of characters: alphanumeric, characters
!#\$%&'()*~!{}<>?_~^[]/@*.,;:;+¥

Important

- Is not possible to create multiple user IDs. Changing the user ID causes the previous ID to be deleted.
- To change only the password, enter the current user ID into the field for [New user ID].
- Change user IDs and passwords often to ensure security.

● Setting the destination email addresses for sending emails during a system alert [System alert]

E-mail notification can be sent when an error occurs in one of the devices that comprise the Center Module. This tab is used to set the destination e-mail addresses for sending e-mail notification.

Click the [Maintenance] button, then the [System alert] tab.

System alert	
Destination E-mail address	Address 1
	Address 2
	Address 3
	Address 4
	Address 5

Set

[Destination Email address]

Set the destination email addresses. The same message can be sent to up to 5 email addresses.

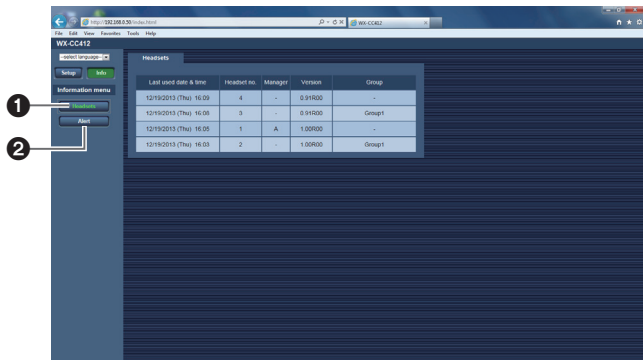
Number of characters: 3 to 128

Important

- E-mail notification is not possible for some types of errors.

Information display menu

When the [Info] button is clicked, the menu panel displays the Information display menu panel.



1 [Headsets] button

This button is used to check the status of All-In-One Headsets and Belt Packs registered to the Center Module.

2 [Alert] button

This button is used to check the status of security alerts and error alerts from the Center Module.

■ Checking the status of All-In-One Headsets and Belt Packs

This tab is used to check the status of All-In-One Headsets or Belt Packs that are registered to the Center Module. To display this screen, click the [Headsets] button in the Information display menu panel.

[Last used date & time]

This column displays the date and time that the All-In-One Headset or Belt Pack was last used.

[Headset no.]

This column displays the number of the All-In-One Headset or Belt Pack.

Note

- The number of the All-In-One Headset or Belt Pack can be checked with the voice prompt that sounds when the All-In-One Headset or Belt Pack is turned on.

[Manager]

This column displays the All-In-One Headset or Belt Pack that is set as the manager All-In-One Headset or Belt Pack. "A" is displayed for the manager of Lane A. "B" is displayed for the manager of Lane B.

[Version]

This column displays the version of the All-In-One Headset or Belt Pack software.

[Group]

This column displays the group to which the All-In-One Headset or Belt Pack belongs. This setting can be changed through operations on the Center Module.

■ Checking the status of alerts

This screen is used to check the status of security alerts and error alerts from the Center Module.

To display this screen, click the [Alert] button in the Information display menu panel.

● Checking the status of security alerts [Security alert]

This tab displays security alerts that are currently occurring.

Security alert		System alert
Initiation time	Cause	
12/19/2013 (Thu) 16:13:27	F button	
12/19/2013 (Thu) 16:13:11	Alert 1	

[Initiation time]

This column displays the time and date of security alerts.

[Cause]

This column displays the cause of security alerts that are occurring.

Information display menu

● Checking the status of system alerts

[System alert]

This tab displays information about errors that are occurring in devices that comprise the Center Module.



[Initiation time]

This column displays the time and date of system alerts.

[Cause]

This column displays the cause of system alerts that are occurring.

Important

- Operation of the Center Module cannot be continued during an error alert. Promptly inquire with the dealer if an error alert occurs.

Troubleshooting

Check the following before requesting repair.

Consult your sales shop if these measures do not resolve a problem, if symptoms not listed here occur, or if you have a question related to engineering.

Symptom	Cause/solution	Reference pages
Access is not possible from a Web browser.	<ul style="list-style-type: none"> ● Is a category 5e or higher cable connected to the network connector? → Use a category 5e or higher cable. 	—
	<ul style="list-style-type: none"> ● Is the link lamp lit up? → If it is not lit up, the LAN may not be connected properly or the network that the unit is connected to may not be working properly. Check the cable connections and wiring. 	—
	<ul style="list-style-type: none"> ● Is the power for the Center Module turned on? → Check if the power is turned on for the Center Module. 	Operating Instructions <Installation Guide>
	<ul style="list-style-type: none"> ● Are you accessing the wrong IP address? → Follow the steps below to check the connection. In the Windows command prompt, input > ping *.*.*.*.*.* (*** is the IP address of the Center Module). If “Reply” is received from the Center Module, the connection is working properly. If “Reply” is not received, check the IP address of the Center Module. 	Operating Instructions <Setup Instructions>
	<ul style="list-style-type: none"> ● Is the IP address the same as that of another device? → If so, use a different IP address. 	Operating Instructions <Setup Instructions>
	<ul style="list-style-type: none"> ● Is the network subnet mask set properly? → If the Center Module and the PC are both connected in the same subnet: Set the IP address of the Center Module and the PC to the same subnet. When accessing the Center Module in the same subnet, it is recommended to set the Center Module address to the “remove from proxy” address. → If the Center Module and the PC are connected to different subnets: Check the default gateway value set to the Center Module. 	Operating Instructions <Setup Instructions>
	<ul style="list-style-type: none"> ● Did you try accessing “http://” while using the HTTPS function? → When using HTTPS, access by writing “https://”. Also, the port number must be entered. 	P. 12
	<ul style="list-style-type: none"> ● Did you change the HTTP port number or HTTPS port number? → If the HTTP port number or HTTPS port number has been changed, input “http://Center Module IP address:port number” into the address bar of the Web browser. 	—

Troubleshooting

Symptom	Cause/solution	Reference pages
The Center Module cannot be accessed via the Internet.	<ul style="list-style-type: none"> ● Are the network settings for the Center Module incorrect? → Set the correct default gateway and DNS server address. If using the DDNS service, confirm that the settings are correct. 	P. 12 Operating Instructions <Setup Instructions>
	<ul style="list-style-type: none"> ● Is “default gateway” set for the network? → Set it correctly. 	P. 12
	<ul style="list-style-type: none"> ● Is port forwarding set for the router? → If the router being used does not have the UPnP function, port forwarding must be set to enable access to the Center Module via the Internet. Refer to the instruction manual for the router for instructions on how to set up port forwarding. 	P. 13
	<ul style="list-style-type: none"> ● Has the router’s UPnP function been disabled? → Refer to the instruction manual for the router for instructions on how to enable UPnP. 	P. 13
	<ul style="list-style-type: none"> ● Has packet filtering or another tool been set on the router that prohibits access via the Internet? → Set the router being used to allow access via the Internet. Refer to the instruction manual for the router for setting instructions. 	—
	<ul style="list-style-type: none"> ● Is the IP address for the local network (local address) being used for access? → Access with the IP address of the Center Module that is used when using the Internet as the global address and the port number of the Center Module. 	—
It is not possible to upload message voice source files.	<ul style="list-style-type: none"> ● Has an SD card been inserted? → These files cannot be uploaded unless an SD card has been inserted. If an SD card has not been inserted, the remaining capacity reads “-----KB/-----KB” when the [SD memory card] button in the Setup menu panel is clicked. 	P. 26
	<ul style="list-style-type: none"> ● Is there insufficient space on the SD card? → Files that are larger than the space remaining on the SD card cannot be uploaded. 	P. 26
	<ul style="list-style-type: none"> ● Is the SD card locked? → Files cannot be uploaded if the SD card is locked. 	—
The images from the Network Cameras are not being displayed on the Center Module.	<ul style="list-style-type: none"> ● Are the IP address and port number of the Network Cameras correct? ● Are the authentication settings for the Network Cameras correct? → Confirm that the authentication settings for the network cameras and the “Network Camera settings” of this unit (“Setting Network Cameras connected to the unit” on p.15) are the same. 	—

**Panasonic System Communications Company of North America,
Unit of Panasonic Corporation of North America**

www.panasonic.com/business/

For customer support, call 1.800.528.6747

Two Riverfront Plaza, Newark, NJ 07102-5490

Panasonic Canada Inc.

5770 Ambler Drive, Mississauga, Ontario, L4W 2T3 Canada

(905)624-5010

www.panasonic.ca